



AIR CONDITIONING

**GENERAL SPECIFICATIONS
AND
PRODUCT DESCRIPTION**

Effective 1 February 2013

PRODUCT DESCRIPTION - ALL MODELS

FAN

Direct drive, high efficiency, low noise. All polymer with taper lock quick coupling attachment. Statically and dynamically balanced. The Powerflow fan used on the larger systems features a 'golf ball' like dimpled surface to improve efficiency and lower noise.

FAN CURVE CHARACTERISTICS

Superior static pressure handling ability (fan curve) reflected as a percentage air flow at resistance points in pascals:

| Static Pressure Pascals | 600w Motor (%) | 750w Motor (%) | 1000w Motor (%) |
|-------------------------|----------------|----------------|-----------------|
| 0 | 100 | 100 | 100 |
| 20 | 98 | 98 | 98 |
| 40 | 95 | 94 | 95 |
| 60 | 93 | 92 | 91 |
| 80 | 88 | 88 | 88 |
| 100 | 86 | 86 | 85 |
| 120 | 82 | 78 | 82 |
| 140 | 78 | 71 | 77 |
| 160 | 73 | | 71 |
| 180 | | | 65 |

FAN MOTOR

Manufactured by Teco Australia. The motors feature quality Japanese bearings with ultra high temperature grease and have a projected bearing life in excess of 30,000 hours. The overall motor service life is projected to be in excess of 10 years, based on average annual usage in domestic installations.

Mounting the motor after the fan blade ensures the highest air velocity over the motor. This maximizes cooling and prevents moisture forming.

WATER CIRCULATION PUMP

The heavy duty pump incorporates the best quality components and has been manufactured for an extended service life. A fully sealed basket enclosure prevents debris from entering the water circulation system.

WATER MANAGEMENT & CONTROL SYSTEM

Electronic regulation of water level by measurement of 'magnetic hall effect'. Consistent water level accurate to within 1 mm. No adjustment required.

The inlet water is controlled by switching on and off a 24v inlet water solenoid valve which is only powered during fill times.

Our patented drain valve features a simple mechanical-only operation based on a 'weight of water' counterweight principle.

FILTER PADS

The cellulose pads are manufactured to rigorous standards - flute size 5090.

CASING

Thermoformed and extruded polymer. Manufactured by BASF under the LURAN-S brand name. Especially formulated for structural integrity and resistance to weathering and UV. Ten year casing warranty on polymer.

ELECTRONIC CONTROLS

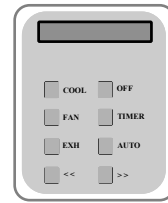
Designed and manufactured by Air Group Australia. C-Tick and RoHS approved to Australian standards, as well as the European CE standard. Circuit board independently fuse protected.

FLOOR AREA CAPACITY

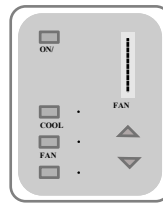
Model number denotes floor area to be cooled in m² i.e. D125 = 125m² floor area at 2.4 ceilings. See COMCOOL 2.

CONTROLLER SPECIFICATIONS - ALL MODELS

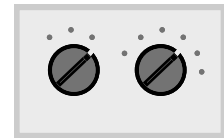
| CONTROLLER FEATURES | | QM | QA |
|---|------------------|-------------|-----------|
| Electrical Connection - via low voltage control cable | | X | X |
| Cool Mode | | X | X |
| Fan-Only Mode | | X | X |
| Exhaust Mode | | X | X |
| Pump only Mode (Bushfire mode) | | | X |
| Fan Speeds | | 10 | 100 |
| Countdown Timer - Start/Stop | | | X |
| Display | LED indicators | X | |
| | LED text display | | X |
| Temperature Display | | | X |
| Thermostat Control | | | X |
| Wash Cycle - Pads wet prior to fan starting | | X | X |
| Periodic Drain Cycle - Adjustable hours | | X 2.5, 5 | X 5-99 |
| Rinse Cycle - end of day rinses pads with fresh water | | X | X |
| Auto Drain Function - Dry sump when not in use | | X | X |
| Drain After Flush Cycle Option | | X | X |
| Control Cable Length - Metres | | 15 | 15 |



QA



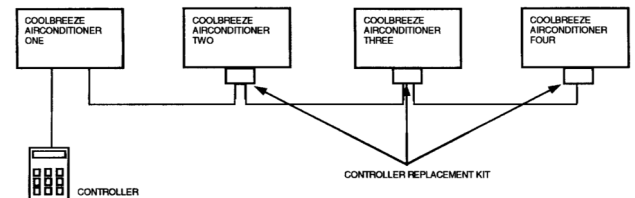
QM



MOBILE

ACCESSORIES AVAILABLE:

- **4 Seasons Weather Seal - suits 550mm square dropper**
- **Controller Replacement Kit - suits QM & QA**
Consists of PCB which is plugged into the controller header on the second and each subsequent air conditioning unit, which are then linked together by an interconnecting 12m controller cable.



NOTE 1: Minimum KW capacities have been calculated according to AS2910-2000 under standardized conditions. Inlet dry bulb temperature 38 degrees, inlet wet bulb temperature 21 degrees and comfort dry bulb temperature 27.4 degrees. Calculations are based on air flow as per CSIRO report. 00/228 and Celdek saturation efficiency test as per CSIRO report 90/16m.

NOTE 2: An indicative airflow to compare systems rated under the old 'air flow' and 'air change' method of sizing. The old ratings which are no longer applicable, were based on 'design' or nominal air flow output. Specifications are subject to change without notice.

AIR GROUP AUSTRALIA

Western Australia
28/30 Division St,
Welshpool, WA
6106
Tel (08) 9350 2200
Fax (08) 9353 4225

South Australia
56 Deeds Road
North Plympton
SA 5039
Tel (08) 83509769
Fax (08) 83509791

Victoria
5 Hawker Street
Airport West
VIC 3020
Tel (03) 83361042
Fax (03) 83361693

For Service
1300 364 220

SPECIFICATIONS - HERITAGE “D” SERIES DOWN DISCHARGE

| Model | | ALL | D 095 | D 125 | D160 | D195 | D230 | D 255 |
|---|---|--------------|--------------|--------------|--------------|-----------|-----------|-----------|
| Motor | Voltage (50 Hz) | 220-240 | | | | | | |
| | Thermal Overload | Yes | | | | | | |
| | Insulation | 'F' Class | | | | | | |
| | Capacitor - uf | | 25 | 25 | 30 | 30 | 30 | 30 |
| | Resistance - Windings Main/Aux at 20°C | | 5.01/6.65 | 5.01/6.65 | 4.03/5.36 | 2.34/4.43 | 2.34/4.43 | 2.34/4.43 |
| | Watts - Model TACEVA - VS - | | 600 | 600 | 750 | 1000 | 1000 | 1000 |
| | Amp Draw - low/high | | 2.65/3.6 | 2.65/3.6 | 2.7/3.85 | 2.9/5.6 | 2.9/5.6 | 2.9/5.6 |
| | RPM - low/high | | 600-750/1370 | 600-750/1370 | 600-750/1350 | 850/1400 | 850/1400 | 850/1400 |
| Fan | Auswing II 35° | | X | X | | | | |
| | Auswing II 40° | | | | X | | | |
| | Powerflow Fixed Pitch | | | | | X | X | X |
| | Diameter mm | 524 | | | | | | |
| Pump | Voltage (50 Hz) | 220-240 | | | | | | |
| | Thermal Overload - UL certified | Yes | | | | | | |
| | Insulation | 'C' Class | | | | | | |
| | Performance - litres per minute to pads | 26 | | | | | | |
| | Power at 1m head - Amps/Watts | .37/66 | | | | | | |
| | RPM at 1m head | 2550 | | | | | | |
| Water | Inlet Connection | ½ inch BSP | | | | | | |
| | Drain (DVW) | 40mm | | | | | | |
| | Drain Optional | 19mm Barb | | | | | | |
| | Tank Capacity (litres) | 10-12 | | | | | | |
| | Drain Valve | Yes | | | | | | |
| | Provision for Bleed-off & drain valve | Yes | | | | | | |
| | Water Level | Magna Sensor | | | | | | |
| | *Max. water consumption per hour (litres) | | 21.5 | 27 | 36 | 42 | 51 | 60 |
| Filter Media | Number of Filter Pads | 4 | | | | | | |
| | Size mm | | 830 x 370 | 830 x 460 | 830 x 460 | 830 x 535 | 830 x 650 | 830 x 770 |
| | Width mm | | 75 | 75 | 100 | 100 | 100 | 100 |
| Performance capacity kw (see note 1) | | | 7 | 9 | 11 | 13 | 15 | 17 |
| Cooling Capacity m3 (Comcool Zone 2) | | | 228 | 300 | 384 | 468 | 552 | 612 |
| Design Air Flow (see note 2) | cmh | | 7500 | 10000 | 12500 | 15000 | 18000 | 19500 |
| | cfm | | 4400 | 5900 | 7400 | 8900 | 10700 | 11600 |
| | Lit/sec | | 2000 | 2800 | 3500 | 4200 | 5000 | 5400 |
| DBA - Measured at 1m - High/Low | | | 64/52 | 64/52 | 66/53 | 65/53 | 65/53 | 65/53 |
| Depth/Width mm | | 1090x1090 | | | | | | |
| Height mm | | | 570 | 660 | 660 | 735 | 850 | 970 |
| Height Above Dropper | | | 310 | 400 | 400 | 475 | 590 | 710 |
| Dropper Size | | 550x550 | | | | | | |
| Shipping Weight kg | | | 44.5 | 46 | 48 | 54 | 56.5 | 58.5 |
| Ship Vol m3 - | Within Australia | | .645 | .72 | .73 | .765 | .81 | .865 |
| Operating Weight kg | | | 55 | 57.5 | 60 | 66.5 | 69 | 71.5 |

FM1371/0213

* At 600 kpa the RPE barbed solenoid fills the sump at 4.5 lt per minute

SPECIFICATIONS - CASCADE - "C" SERIES DOWN DISCHARGE

| Model | | ALL | C 125 | C160 | C205` | C240 |
|---|---|-----------------|--|--|--|--|
| Motor | Voltage | 220-240 (50 Hz) | | | | |
| | Thermal Overload | Yes | | | | |
| | Insulation | 'F' Class | | | | |
| | Capacitor - uf | | 25 | 30 | 30 | 30 |
| | Resistance - Windings Main/Aux at 20°C | | 5.01/6.65 | 4.03/5.36 | 2.34/4.43 | 2.34/4.43 |
| | Watts - Model TACEVA - VS - | | 600 | 750 | 1000 | 1000 |
| | Amp Draw - low/high | | 2.65/3.6 | 2.7/3.85 | 2.9/5.6 | 2.9/5.6 |
| | RPM - low/high | | 600-750/1370 | 600-750/1350 | 850/1410 | 850/1410 |
| Fan | Auswing II 35° | | X | | | |
| | Auswing II 40° | | | X | | |
| | Powerflow Fixed Pitch | | | | X | X |
| | Diameter mm | 524 | | | | |
| Pump | Voltage | 220-240 (50 Hz) | | | | |
| | Thermal Overload - UL certified | Yes | | | | |
| | Insulation | 'C' Class | | | | |
| | Performance - litres per minute to pads | 26 | | | | |
| | Power at 1m head - Amps/Watts | .37/66 | | | | |
| | RPM at 1m head | 2550 | | | | |
| Water | Inlet Connection | ½ inch BSP | | | | |
| | Drain (DVW) | 40mm | | | | |
| | Drain Optional | 19mm Barb | | | | |
| | Tank Capacity (litres) | 10-12 | | | | |
| | Drain Valve | Yes | | | | |
| | Provision for Bleed-off & drain valve | No | | | | |
| | Water Level | Magna Sensor | | | | |
| | *Max. water consumption per hour (litres) | | 28 | 37 | 46 | 54 |
| Filter Media | Number of Filter Pads | 4 | | | | |
| | Size mm | | 830 x 1 x 275 1 x 640 2 x 640/300 | 830 x 1 x 265 1 x 635 2 x 635/295 | 830 x 1 x 385 1 x 755 2 x 755/415 | 830 x 1 x 495 1 x 863 2 x 865/525 |
| | Width mm | | 75 | 100 | 100 | 100 |
| | Performance capacity kw (see note 1) | | 9 | 11 | 14.5 | 16.5 |
| Cooling Capacity m3 (Comcool Zone 2) | | 300 | 384 | 492 | 576 | |
| Design Air Flow (see note 2) | cmh | | 10000 | 12500 | 16000 | 18500 |
| | cfm | | 5900 | 7400 | 9500 | 10700 |
| | Lit/sec | | 2800 | 3500 | 4400 | 5100 |
| DBA - Measured at 1m - High/Low | | | 65/53 | 65/53 | 64/52 | 64/52 |
| Depth/Width mm | | 1090x1090 | | | | |
| Height mm | | | 825 | 825 | 945 | 1056 |
| Height Above Dropper | | | 565 | 565 | 685 | 795 |
| Dropper Size | | 550x550 | | | | |
| Shipping Weight kg | | | 47 | 49 | 56.5 | 59 |
| Ship Vol m3 - | Within Australia | | .8 | .85 | .91 | .975 |
| Operating Weight kg | | | 58 | 60.5 | 68.5 | 72 |

FM1371/0213

* At 600 kpa the RPE barbed solenoid fills the sump at 4.5 lt per minute

SPECIFICATIONS - TWIN FAN "D" SERIES DOWN DISCHARGE

| Model | | ALL | D500 |
|---|---|--------------|------------------------------------|
| Motor | Voltage (50 Hz) | 220-240 | |
| | Thermal Overload | Yes | |
| | Insulation | 'F' Class | |
| | Capacitor - uf | 30 | |
| | Resistance Winding Main/Aux at 20°C | | 2.34/4.43 |
| | Watts - Model TACEVA - VS - | | 2X1000 |
| | Amp Draw low/high PER MOTOR x 2 | | 2.9/5.6 |
| | RPM - low/high | | 850/1410 |
| Fan | Auswing II 40° | | |
| | Powerflow Fixed Pitch | | X |
| | Diameter mm | 524 | |
| Pump | Voltage (50 Hz) | 2X220-240 | |
| | Thermal Overload - UL certified | Yes | |
| | Insulation | 'C' Class | |
| | Performance - litres per minute to pads | 26 | |
| | Power at 1m head - Amps/Watts | .37/66 | |
| | RPM at 1m head | 2550 | |
| Water | Inlet Connection | ½ inch BSP | |
| | Drain (DVW) | 40 mm | |
| | Drain Optional | 19 mm Barb | |
| | Tank Capacity (litres) | 18-20 | |
| | Drain Valve | Yes | |
| | Provision for Bleed-off & Drain Valve | Yes | |
| | Water Level | Magna Sensor | |
| | *Max. water consumption per hour (litres) | | 100 |
| Filter Media | Number of Pads | | 6 |
| | Size mm | | 2 x 960H X 928W 4 X 960H X 645W |
| | Width mm | | 100 |
| Cooling Capacity m3 (Comcool Zone 2) | | | 1200 |
| Design Air Flow (see note 2) | cmh | | 36000 |
| | cfm | | 21300 |
| | Lit/sec | | 10000 |
| DBA - Measured at 1m - High/Low | | | 83/63 |
| Depth/Width mm | | 1630 x 1200 | 1630 x 1200 |
| Height mm | | | 1160 |
| Height Above Dropper mm | | | 910 |
| Shipping Weight kg | | | 101 kg |
| Ship Vol m3 - | Within Australia | | 1.6 m3 |
| Operating Weight kg | | | 114 kg |

* At 600 kpa the RPE barbed solenoid fills the sump at 4.5 lt per minute

SPECIFICATIONS - TOP DISCHARGE

| Model | | ALL | T095 | T125 | T160 | T195 | T230 | T255 |
|---|---|--------------|--------------|--------------|--------------|-----------|-----------|-----------|
| Motor | Voltage (50 Hz) | 220-240 | | | | | | |
| | Thermal Overload | Yes | | | | | | |
| | Insulation | 'F' Class | | | | | | |
| | Capacitor - uf | | 25 | 25 | 30 | 30 | 30 | 30 |
| | Resistance Windings Main/Aux at 20°C | | 5.01/6.65 | 5.01/6.65 | 4.03/5.36 | 2.34/4.43 | 2.34/4.43 | 2.34/4.43 |
| | Watts - Model TACEVA - VS - | | 600 | 600 | 750 | 1000 | 1000 | 1000 |
| | Amp Draw - low/high | | 2.65/3.6 | 2.65/3.6 | 2.7/3.85 | 2.9/5.6 | 2.9/5.6 | 2.9/5.6 |
| | RPM - low/high | | 600-750/1370 | 600-750/1370 | 600-750/1350 | 850/1400 | 850/1400 | 850/1400 |
| Fan | Auswing II 35° | | X | X | | | | |
| | Auswing II 40° | | | | X | | | |
| | Powerflow Fixed Pitch | | | | | X | X | X |
| | Diameter mm | 524 | | | | | | |
| Pump | Voltage (50 Hz) | 220-240 | | | | | | |
| | Thermal Overload - UL certified | Yes | | | | | | |
| | Insulation | 'C' Class | | | | | | |
| | Performance - litres per minute to pads | 26 | | | | | | |
| | Power at 1m head - Amps/Watts | .37/66 | | | | | | |
| | RPM at 1m head | 2550 | | | | | | |
| Water | Inlet Connection | ½ inch BSP | | | | | | |
| | Drain (DVW) | 40 mm | | | | | | |
| | Drain Optional | 19 mm Barb | | | | | | |
| | Tank Capacity (litres) | 10-12 | | | | | | |
| | Drain Valve | Yes | | | | | | |
| | Provision for Bleed-off & Drain Valve | Yes | | | | | | |
| | Water Level | Magna Sensor | | | | | | |
| | *Max. water consumption per hour (litres) | | 21.5 | 27 | 36 | 42 | 51 | 60 |
| Filter Media | Number of Pads | 4 | | | | | | |
| | Size mm | | 830 x 370 | 830x460 | 830x460 | 830x535 | 830x650 | 830x770 |
| | Density mm | | 75 | 75 | 100 | 100 | 100 | 100 |
| Performance capacity kw (see note 1) | | | 7 | 9 | 11 | 13 | 15 | 17 |
| Cooling Capacity m3 (Comcool Zone 2) | | | 228 | 300 | 384 | 468 | 552 | 612 |
| Design Air Flow (see note 2) | cmh | | 7500 | 10000 | 12500 | 15000 | 18000 | 19500 |
| | cfm | | 4400 | 5900 | 7400 | 8900 | 10700 | 11600 |
| | Lit/sec | | 2000 | 2800 | 3500 | 4200 | 5000 | 5400 |
| DBA - Measured at 1m - High/Low | | | 64/52 | 66/53 | 66/53 | 65/53 | 65/53 | 65/53 |
| Depth/Width mm | | 1090x1090 | | | | | | |
| Height mm | | | 815 | 905 | 905 | 980 | 1095 | 1215 |
| Height Above Mounting Base mm | | | 655 | 745 | 745 | 820 | 935 | 1055 |
| Flexible Connector - Outlet size mm | | 550-700 | | | | | | |
| Shipping Weight kg | | | 70.5 | 72.0 | 74 | 80 | 82.5 | 84.5 |
| Ship Vol m3 - | Within Australia | | 1.05 | 1.125 | 1.13 | 1.16 | 1.21 | 1.26 |
| Operating Weight kg | | | 82 | 84.5 | 86 | 92.5 | 94.0 | 97.5 |

FM1371/0213

* At 600 kpa the RPE barbed solenoid fills the sump at 4.5 lt per minute

SPECIFICATIONS - SIDE DISCHARGE/MOBILE

| Model | | ALL | M240 - MOBILE | S100 | S240 |
|---|---|------------|---------------|--------------------------------|---------------|
| Motor | Voltage (V) (50 Hz) | 220-240 | | | |
| | Thermal Overload | Yes | | | |
| | Insulation | 'F' Class | | | |
| | Capacitor - uf (uF) | | 30 | 15 | 30 |
| | Resistance (OHMS) - Windings Main/Aux at 20°C | | 2.3/4.4 | 10.7/39.3 | 2.34/4.43/ |
| | Watts - Model TACEVA - VS - Power (WATTS) | | 1000 | 315 | 1000 |
| | Amp Draw - low/high current (AMPS) | | 2.9/5.6 | 2.0/3.3 | 2.9/5.6 |
| | RPM - low/high SPEED (RPM) | | 850/1410 | 600/1230 | 850/1410 |
| Fan | Auswing II 35° | | | X | |
| | Powerflow Fixed Pitch | | X | | X |
| | Diameter mm | 524 | | | |
| Pump | Voltage (50 Hz) | 220-240 | | | |
| | Thermal Overload - UL certified | Yes | | | |
| | Insulation | 'C' Class | | | |
| | Performance - litres per minute to pads | 26 | | | |
| | Power at 1m head - Amps/Watts | .37/66 | | | |
| | RPM at 1m head | 2550 | | | |
| Water | Inlet Connection | ½ inch BSP | | | |
| | Drain (DVW) | | N/A | 40 mm | 40 mm |
| | Drain Optional | | N/A | 19 mm Barb | 19 mm Barb |
| | Tank Capacity (litres) | | 100 | 8-10 | 10-12 |
| | Drain Valve | | No | Yes | Yes |
| | Provision for extra Bleed-off | | No | Yes | Yes |
| | Water Level | | Manual | Magna Sensor | Magna Sensor |
| | *Max. water consumption per hour (litres) | | 55 | 23 | 55 |
| Filter Media | Number of Pads | 3 | | | |
| | Size mm | | 3 x 830 x 950 | 1 x 830 x 930 2 x 270 x 930 | 3 x 830 x 950 |
| | Width mm | | 100 | 75 | 100 |
| Cooling Capacity m3 (Comcool Zone 2) | | | 576 | 240 | 576 |
| Design Air Flow | cmh | | 18500 | 8000 | 18500 |
| | cfm | | 11600 | 4800 | 10700 |
| | Lit/sec | | 5400 | 2200 | 5100 |
| DBA - Measured at 1m - High/Low | | | 65/53 | 64/52 | 66/53 |
| Depth/Width mm | | | 1130 x 1220 | 1090 x 470 | 1090 x 1090 |
| Height mm | | | 1540 | 1090 | 1320 |
| Height Above Mounting Base mm | | | N/A | 1065 | 1090 |
| Flexible Connector - Outlet size mm | | | N/A | N/A | 550-700 |
| Shipping Weight kg | | | 95 | 57.5 | 80 |
| Ship Vol m3 - | Within Australia | | 1.9 | .925 | 1.17 |
| Operating Weight kg | | | 195 | 67.5 | 92 |

* At 600 kpa the RPE barbed solenoid fills the sump at 4.5 lt per minute

GENERAL SPECIFICATIONS AND PRODUCT DESCRIPTION ALL MODELS



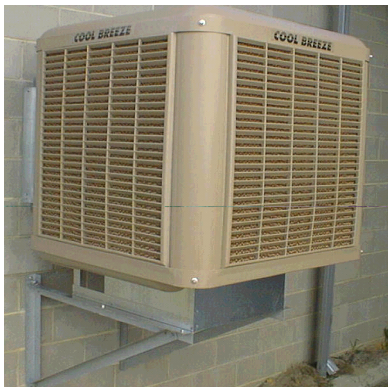
**DOWN DISCHARGE
D95 - D255**



**CASCADE DOWN
DISCHARGE C125 - C240**



**SIDE DISCHARGE
S100**



**SIDE DISCHARGE
S240**



**TOP DISCHARGE
T095-T255**



**TWIN FAN
D400 - D500**

MOBILE M240



WARRANTY WITHIN AUSTRALIA

| TYPE OF INSTALLATION | PARTS | LABOUR |
|--|---------|---------|
| Residential Installation | 5 Years | 3 Years |
| Commercial installation (includes Mobiles) | 2 Years | 2 Years |

*In areas not covered by Airgroup Australia technicians, please refer to service warranty contract agreement for further details.

NOTES